

LAFCO 101

WHAT IS LAFCO?

LAFCO is an independent public agency with countywide jurisdiction established by State law

➤ Cortese-Knox-Hertzberg Local Government Reorganization Act of 2000 (CKH or “Act”)

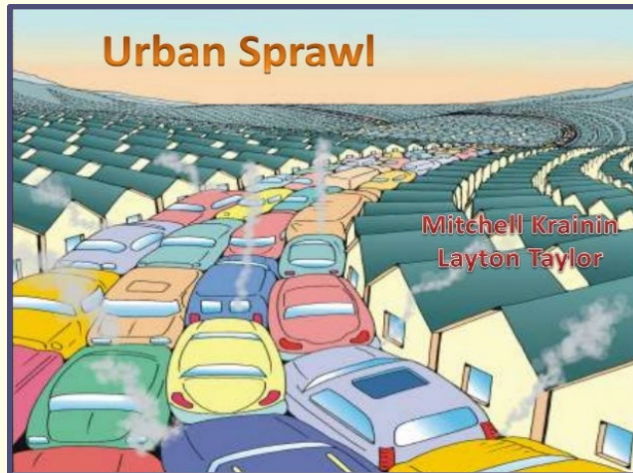
LAFCO oversees changes to local government boundaries involving the formation and expansion of cities and special districts

LAFCO evaluates municipal services and adopts written determinations

LAFCO 101

STATE POLICY FOR LAFCOS:

- Encourage Orderly Growth
- Promote the logical formation and determination of local agency boundaries
- Discourage urban sprawl
- Preserve agricultural and open space lands



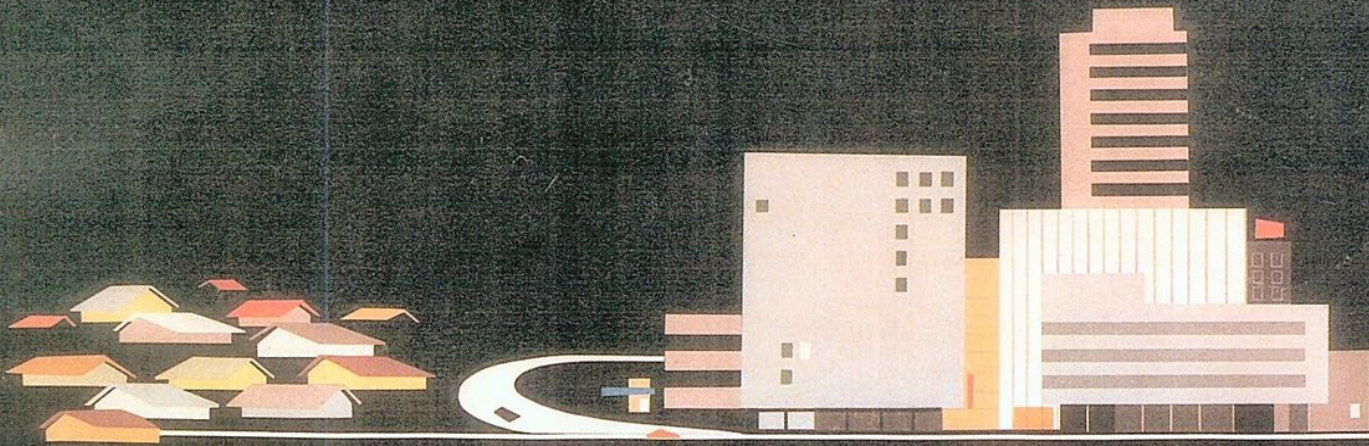
LAFCO 101

WHY WAS LAFCO CREATED?

- Post World War II population and housing boom in California
- Local governments scramble to finance and extend services to new suburbs
- City annexation “wars”
- Proliferation of limited-purpose, special districts

LAFCO 101

MEETING METROPOLITAN PROBLEMS



REPORT OF THE GOVERNOR'S COMMISSION ON METROPOLITAN AREA PROBLEMS

STATE OF CALIFORNIA—Edmund G. Brown, Governor

LAFCO 101

LEGISLATIVE COMPROMISE

- No Statewide Commission or agency
- Every County has a LAFCO
- LAFCO Commissioners are local (not State) appointees
- State law gives broad discretion to LAFCOs to apply the law in light of local conditions and circumstances
- Each LAFCO has authority over boundary decisions within its County, and each LAFCO is independent of other LAFCOs
- Commissioners make final decisions that cannot be appealed to other administrative bodies

LAFCO 101

Who are Napa LAFCO's Commissioners?

City Members

- Margie Mohler, Chair
- Mariam Aboudamous
- Beth Painter, Alternate

County Members

- Anne Cottrell, Vice Chair
- Belia Ramos
- Joelle Gallagher, Alternate

Public Members

- Ken Leary
- Eve Kahn, Alternate

LAFCO 101

HOW IS LAFCO FUNDED?

- Must adopt final budget by June 15
- Annual budget totals approx. \$670,000
 - Prepared by Budget Committee
- Contributions from County and cities/town represent approx. 95% of operating revenues
 - 50% paid by County
 - 50% paid by cities/town based on adopted formula

LAFCO 101

LAFCO OVERSEES AGENCIES & SERVICES



LAFCO 101

WHAT CAN LAFCO DO?

- Create new cities (Incorporations) or eliminate existing cities (Disincorporations)
- Create new special districts (Formations) or eliminate existing special districts (Dissolutions)
- Unite two or more cities or two or more special districts (Consolidations)
- Eliminate an existing special district and assign its duties and functions to an existing city (Merger)

LAFCO 101

WHAT CAN LAFCO DO? (cont.)

- Add territory to existing cities or special districts (Annexations) or remove territory from existing cities or special districts (Detachments)
- Allow service outside of existing city or special district boundaries (Outside Service Agreements)
- Adopt and amend Spheres of Influence
- Prepare Municipal Service Reviews
- Change authorized services of special districts (Exercise New or Different Functions or Classes of Services)

LAFCO 101

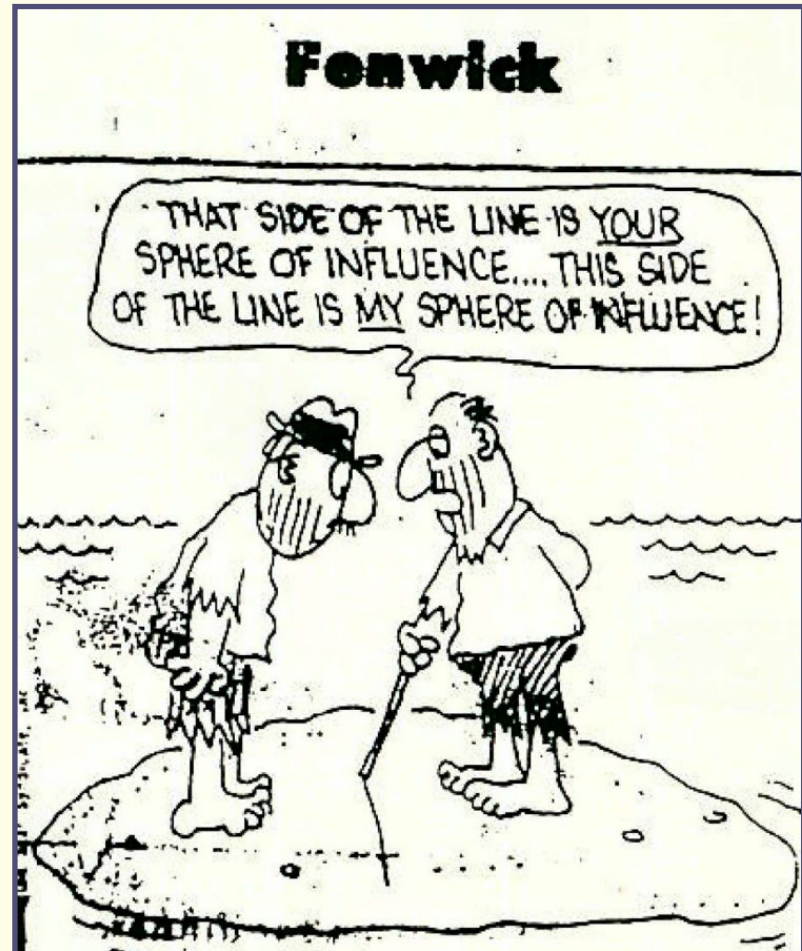
WHAT CAN LAFCO DO? (cont.)

- Study other government agencies that are outside LAFCO's jurisdiction (e.g., school districts)
- Take positions and comment on proposed State legislation affecting LAFCOs
 - CALAFCO Legislative Committee
 - Napa LAFCO Legislative Committee
- Facilitate collaborative discussions with local agencies related to logical and orderly boundaries and services
- Serve as an information hub for local agencies and the general public

LAFCO 101

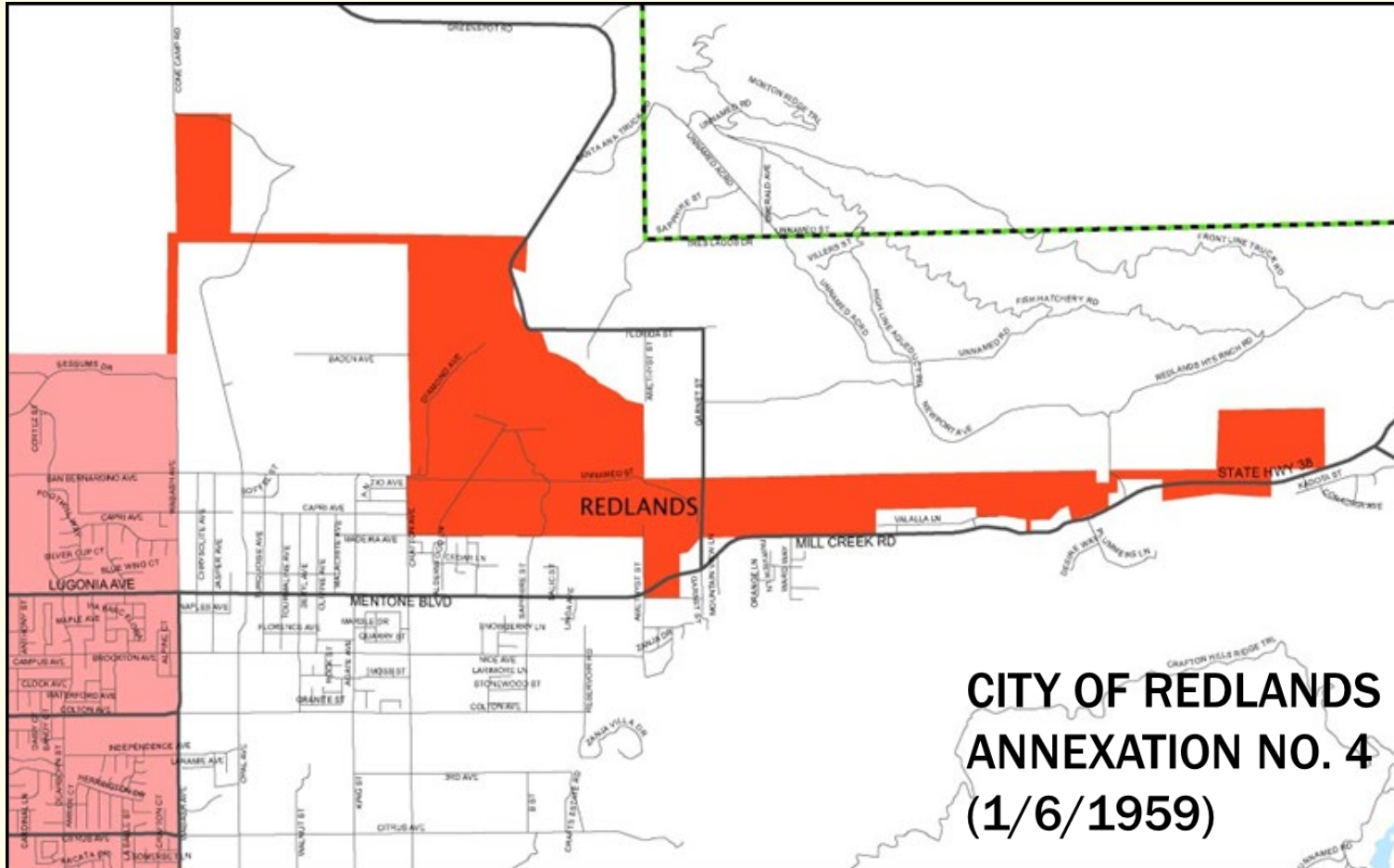
SPHERE OF INFLUENCE (SOI)

- G.C. §56076 defines SOI as a plan for the probable physical boundaries and service area of a local agency (i.e., a planning area)
- SOIs are determined by LAFCO for each city and special district
- Annexations must be consistent with SOIs
- Update each SOI every 5 years, as necessary



LAFCO 101

Classic “cherry stem” annexation:



LAFCO 101

MUNICIPAL SERVICE REVIEW (MSR)

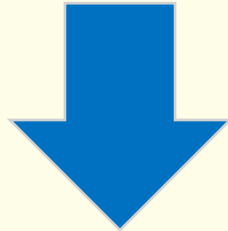
- Study local agencies
 - ❖ Boundaries
 - ❖ Services
 - ❖ Existing land uses
- Showcase best practices
- Recommend changes
- Provide the basis for SOIs



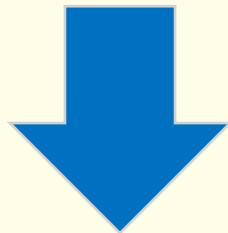
LAFCO 101

TYPICAL PROCESS

LAFCO completes MSR



LAFCO updates SOI



LAFCO acts on proposed changes to boundaries, governance, and services

LAFCO 101



Questions

